



# Vecton titanUV

## Photocatalytically Enhanced Aquarium UV Steriliser

Having been used on a large scale in public aquaria, retailers and aquaculture facilities for over two years, we are now bringing this exclusive technology to the hobby.

### MAIN FEATURES:

- 1.3 times more effective than a standard UV steriliser, making it more energy efficient
- The photocatalytic reaction provides a safer alternative to ozone for even cleaner water
- Specially selected photocatalytic material protects and further improves the lifespan of the high UV resistant plastic body
- UV shield to prevent direct viewing of the UV lamp
- Manufactured from impact resistant, translucent polycarbonate
- Opposing inlet and outlet for easy installation and connection to water supply
- Four stage hosetails for flexible hose from 1/2" to 1 1/4", held in place with screw on collars for easy removal when servicing and maintaining unit.

Max aquariums size  
 Vecton titanUV 550  
 550l  
 Vecton titanUV850  
 850l

Maximum flow rate  
 Vecton titanUV 550  
 1650 l/h  
 Vecton titanUV850  
 2550 l/h

Inlet/outlet size  
 1/2" BSP MT and 1/2", 3/4", 1  
 and 1 1/4" Hosetail

Weight  
 2.5Kg Max. Approx.

Dimensions [LxWxH]  
 530x74x146mm  
 [unpacked ]

FOR FULL SPECIFICATION SEE BACK



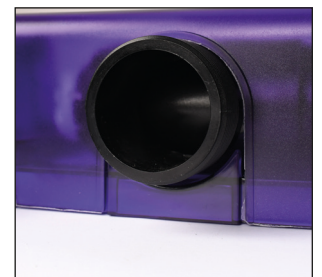
Opposing inlet and outlet



Four stage hosetails



90° Elbow connector



UV shield

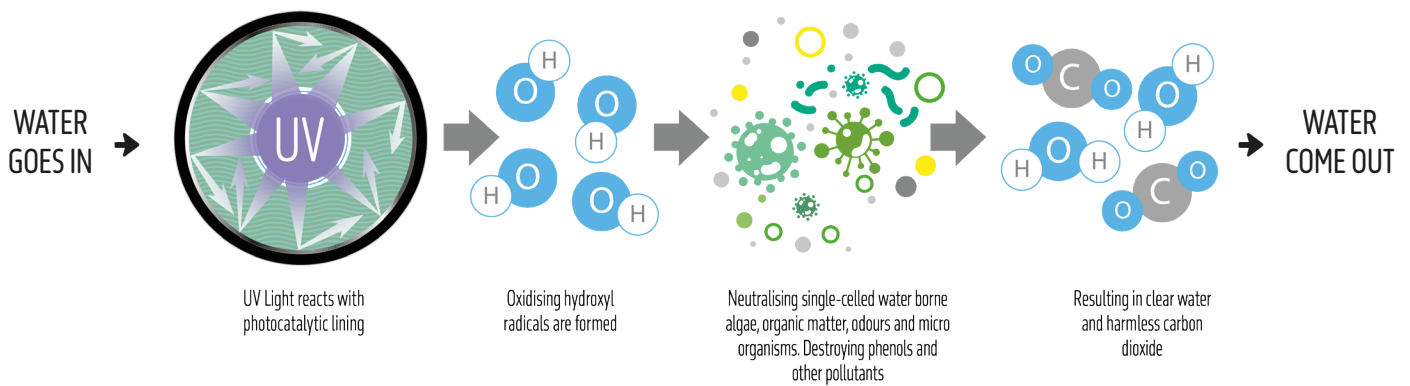
# The Technology Behind It

1.3 times more effective than a standard UV steriliser, making it more energy efficient



# The Science Behind It

The photocatalytic reaction provides a safer alternative to ozone for even cleaner water.



Model	Vecton titanUV 550	Vecton titanUV 850
Code	5215	5216
Max. Aquarium Size.	550l / 121 Imp. gal. / 145 US gal.	850l / 187 Imp. gal. / 224 US gal.
Max. Flow rate	1650l/h / 363 imp. gal. / 436 US gal.	2550l/h / 561 imp. gal. / 674 US gal.
UV Lamp	1 x 15W G15T8	1 x 25W G25T8
Total Power Consumption	17W	27W
Power	100-277V 50/60Hz	
Inlet/Outlet mm	1½" BSP MT and ½", ¾", 1 and 1¼" Hosetail	
Weight	2.5Kg Max. Approx.	
Dimensions	530 x 74 x 146mm	
	IPX4	



**UK**  
Solesbridge Lane  
Chorleywood  
Hertfordshire WD3 5SX  
England

Call +44 01923 284151

**Iberia**  
Rua Cidade de Paris 6  
Parque Industrial do Arneiro  
2660-456 São Julião do Tojal  
Portugal

Call +351 219 739 140

[tropicalmarinecentre.com](http://tropicalmarinecentre.com)

[info@tropicalmarinecentre.co.uk](mailto:info@tropicalmarinecentre.co.uk)